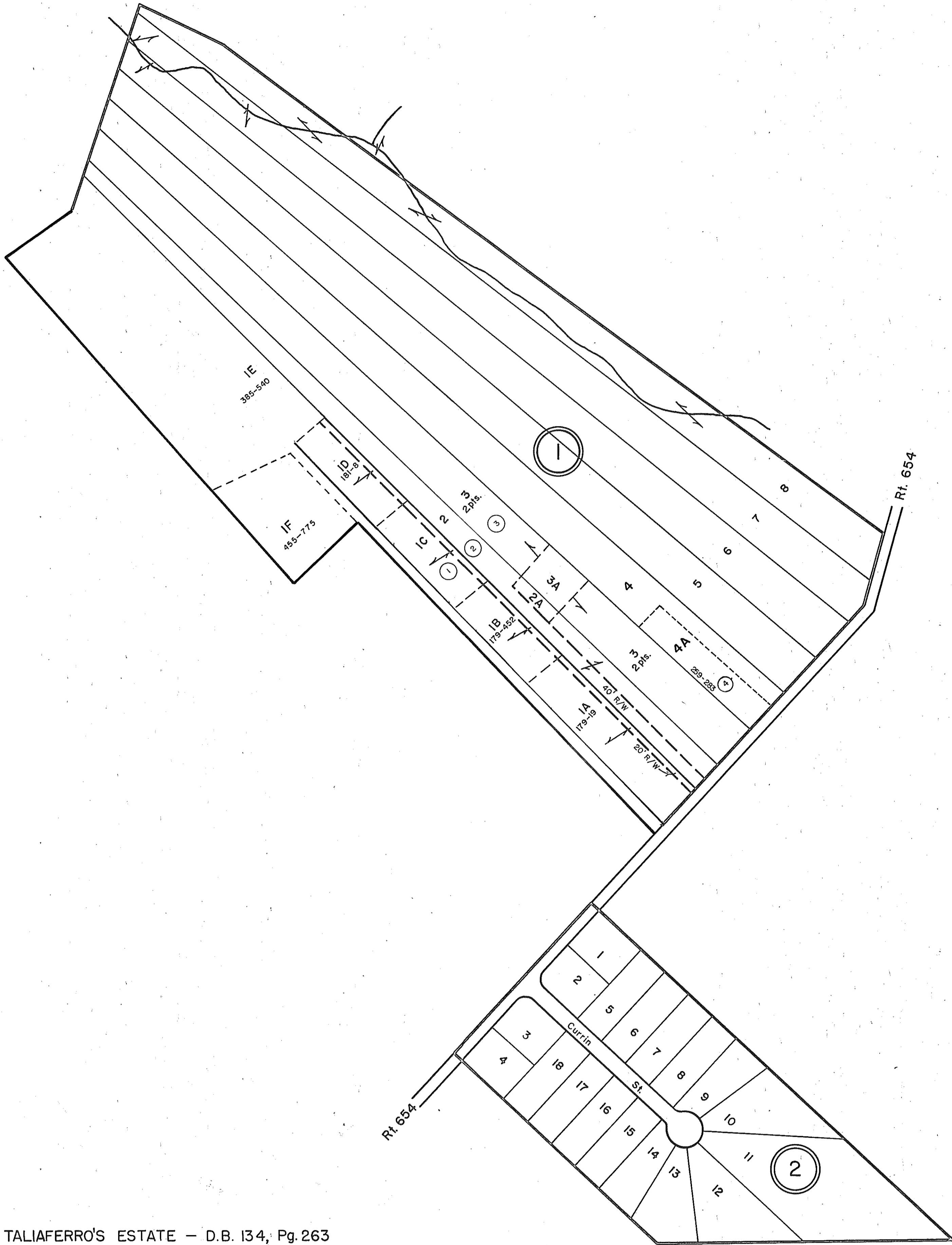
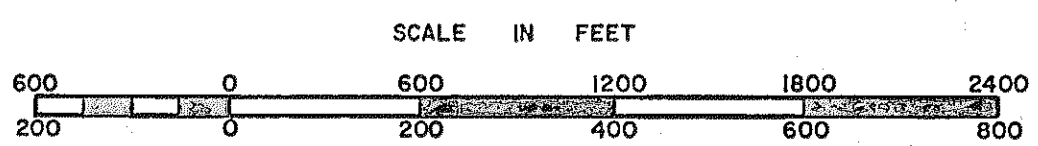


CAROLINE COUNTY



- ① PERCY TALIAFERRO'S ESTATE — D.B. 134, Pg. 263
- ② CURRIN SUBDIVISION — P.B. 2, Pg. 2



REEDY CHURCH DISTRICT

PREPARED BY VIRGINIA STATE DEPARTMENT OF TAXATION, DIVISION OF REAL ESTATE APPRAISAL AND MAPPING

SECTION 84A
INSERT