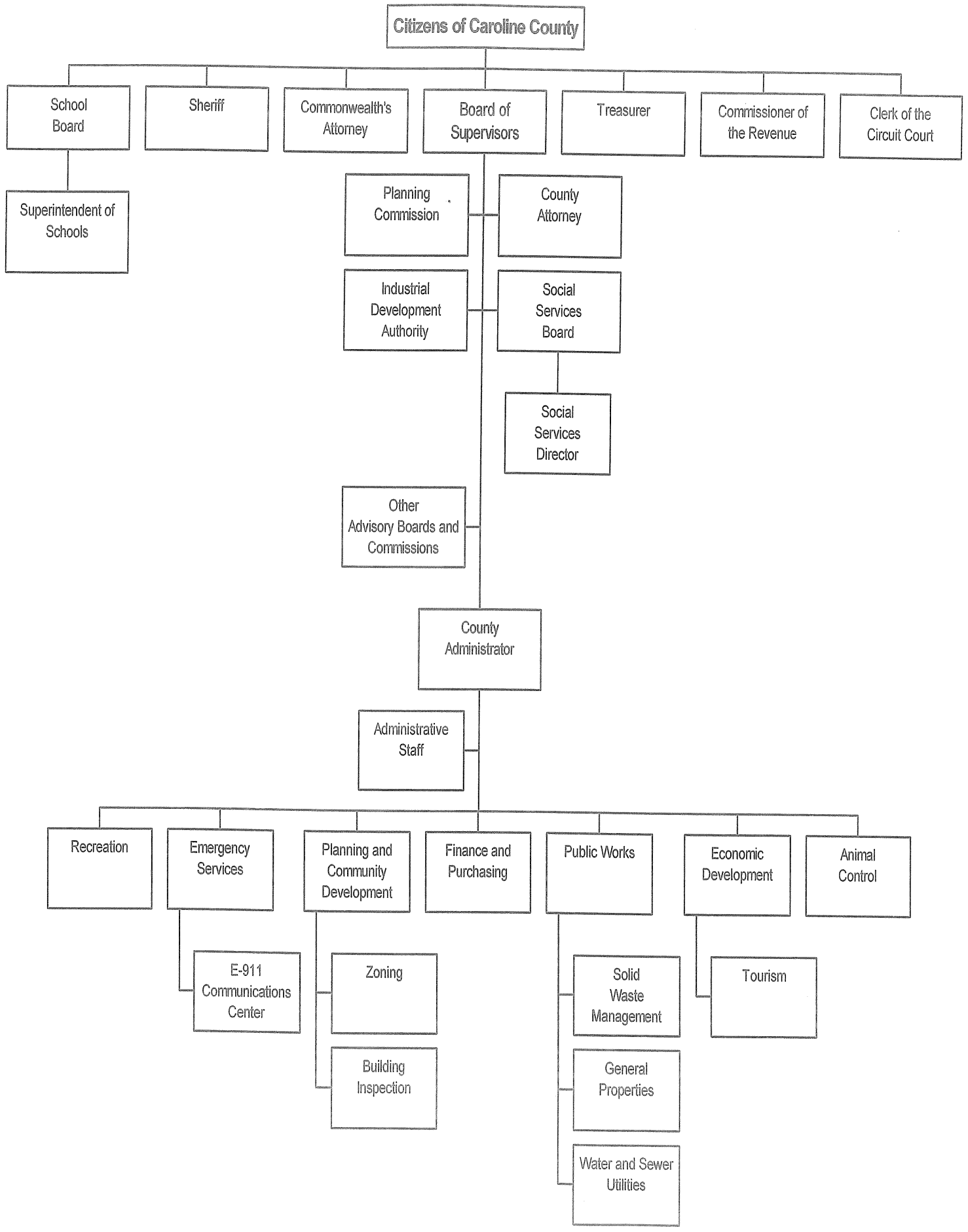




Caroline County, Virginia

Fiscal Year 2007-2008 Adopted Budget

OVERVIEW SECTION





**Caroline County, Virginia
Fiscal Year 2007-2008 Adopted Budget**

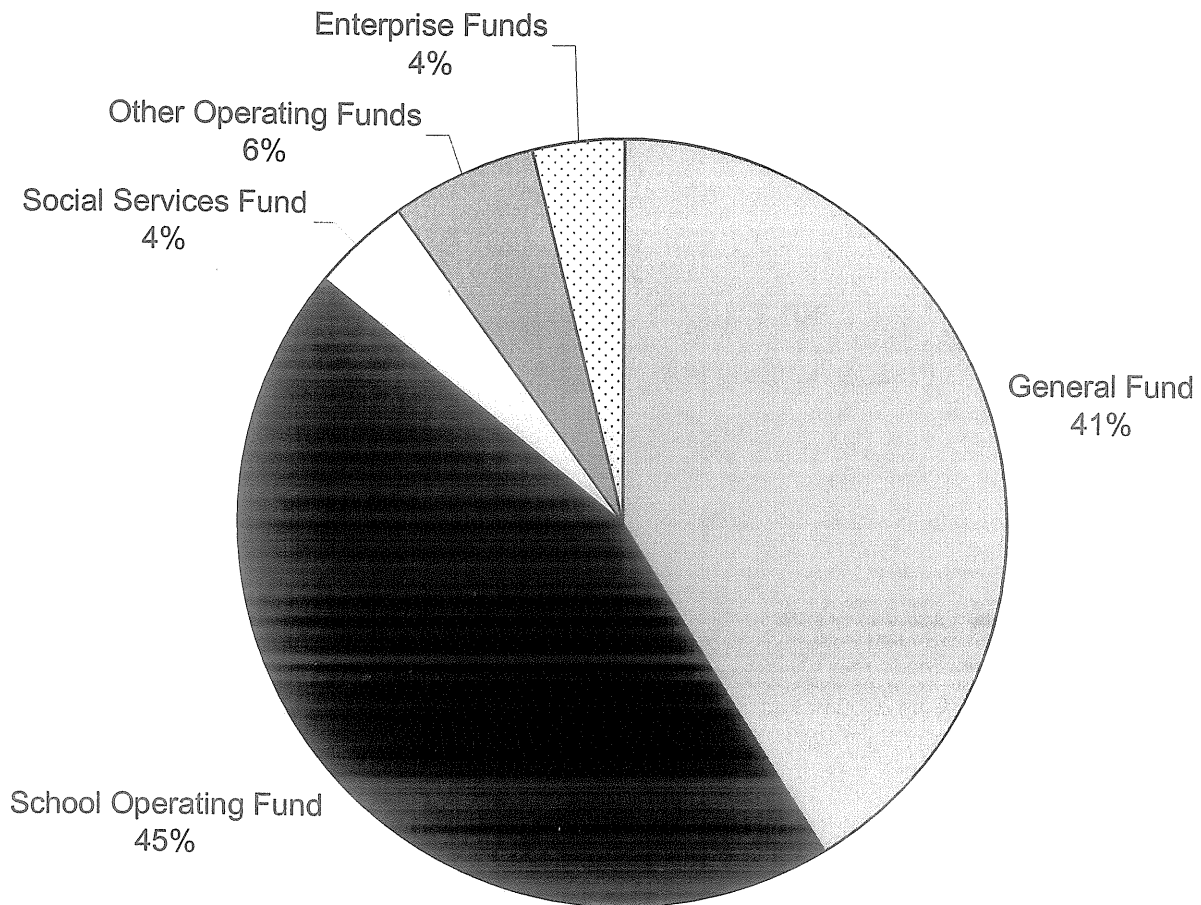
**Total Expenditures and Transfers by Fund
All Funds – Operating and Capital**

<u>Fund</u>	<u>Adopted Budget</u>	<u>Amended Budget</u>	<u>Adopted Budget</u>	<u>Adopted Budget</u>	<u>Change Amount</u>	<u>%</u>
General Fund	\$ 25,607,446	\$ 29,002,191	\$ 31,977,849	\$ 34,439,087	\$ 2,461,238	7.7%
School Operating Funds	\$ 31,949,553	\$ 33,736,301	\$ 37,736,050	\$ 37,419,462	\$ (316,588)	-0.8%
Social Services Funds:						
Social Services Fund	\$ 2,060,801	\$ 2,235,826	\$ 2,287,861	\$ 2,385,886	\$ 98,025	4.3%
CSA Fund	\$ 644,875	\$ 655,554	\$ 723,532	\$ 992,915	\$ 269,383	37.2%
Other Operating Funds:						
E-911 Fund	\$ 513,852	\$ 668,619	\$ 923,195	\$ 955,191	\$ 31,996	3.5%
Law Library Fund	\$ 16,000	\$ 14,000	\$ 8,455	\$ 8,555	\$ 100	1.2%
Courthouse Maint Fund	\$ 25,000	\$ 21,000	\$ 27,500	\$ 24,125	\$ (3,375)	-12.3%
Tourism Fund	\$ 114,809	\$ 150,059	\$ 150,358	\$ 189,138	\$ 38,780	25.8%
Proffers Fund	\$ -	\$ -	\$ -	\$ -	\$ -	
Debt Retirement Fund	\$ 3,433,791	\$ 3,347,865	\$ 4,186,564	\$ 4,035,800	\$ (150,764)	-3.6%
Enterprise Funds:						
Milford Sanitary District	\$ 81,490	\$ 85,906	\$ 132,018	\$ 137,483	\$ 5,465	4.1%
Dawn				\$ 202,797	\$ 202,797	100.0%
Caroline County Public						
Utilites Fund	\$ 2,474,446	\$ 2,454,032	\$ 4,596,749	\$ 2,890,000	\$ 2,142,717	46.6%
Total Operating Budget	\$ 66,922,063	\$ 72,371,353	\$ 82,750,131	\$ 83,680,439	\$ 930,308	1.1%
Less: Inter-Fund Transfers	\$ 12,718,306	\$ 13,573,660	\$ 16,547,876	\$ 14,038,835	\$ (2,509,041)	-15.2%
Net Operating Budget	\$ 54,203,757	\$ 58,797,693	\$ 66,202,255	\$ 69,641,604	\$ 3,439,349	5.2%
Capital Improvement Funds:						
General	\$ 4,724,515	\$ 8,620,467	\$ 5,808,000	\$ 12,966,541	\$ 7,158,541	123.3%
School	\$ 183,000	\$ 2,644,434	\$ 19,225,000	\$ 2,488,904	\$ (16,736,096)	-87.1%
Utility	\$ 1,881,500	\$ 7,166,424	\$ 14,362,000	\$ 20,152,999	\$ 5,790,999	40.3%
Total Capital Improvement Funds	\$ 6,789,015	\$ 18,431,325	\$ 39,395,000	\$ 35,608,444	\$ (3,786,556)	-9.6%
Total Expenditures	\$ 60,992,772	\$ 77,229,018	\$ 105,597,255	\$ 105,250,048	\$ (347,207)	-0.3%



**Caroline County, Virginia
Fiscal Year 2007-2008 Adopted Budget**

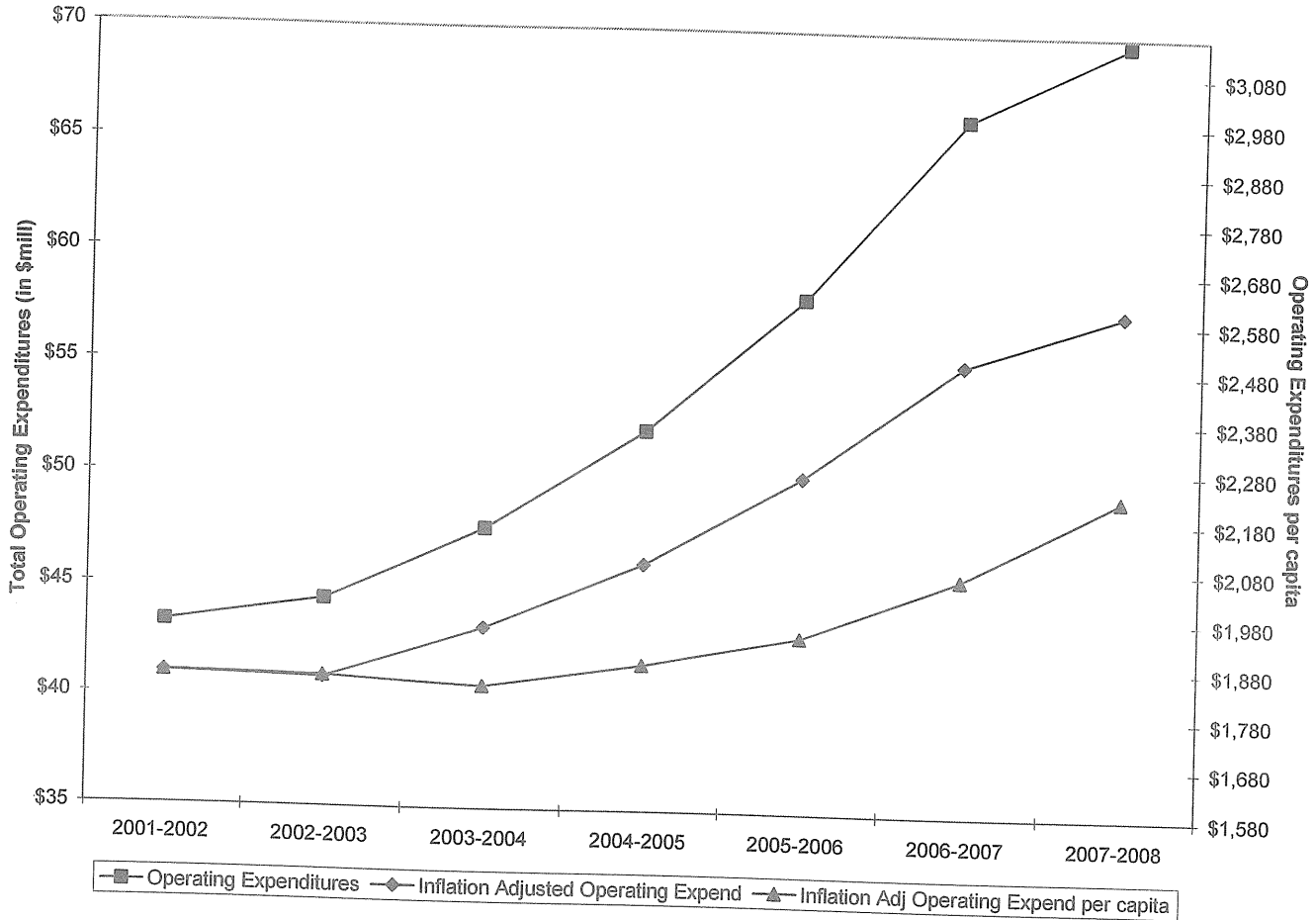
Total Operating Expenditures and Transfers by Fund





**Caroline County, Virginia
Fiscal Year 2007-2008 Adopted Budget**

Budgeted Operating Expenditures - Fiscal Years 2001-2002 to 2007-2008



Operating Expenditures: Unadjusted budgeted net operating expenditures and transfers for all funds for Fiscal Years 2001-2002 through 2007-2008.

Inflation Adjusted Operating Expenditures: Total operating expenditures and transfers for Fiscal Years 2001-2002 through 2007-2008 converted to constant 2000 dollars using the Consumer Price Index published by the Federal Bureau of Labor Statistics.

Inflation Adjusted Operating Expenditures per Capita: Inflation Adjusted Operating Expenditures calculated in the previous series divided by the County's population: US Census (2000); as estimated by the Weldon Cooper Center for Public Service at the University of Virginia (2002 - 2006); estimated using Weldon Cooper Center estimates (2006).